

The importance of establishing a sustainable supply chain in the building services sector.



Introduction

The building services sector plays a significant role in the development and maintenance of modern infrastructure. This encompasses the design, construction and operations of buildings and their supporting systems. The building services sector has a significant impact on the environment, accounting for up to 40% of global energy consumption and greenhouse gas emissions. It is, therefore, essential to establish a supply chain with which you can continue to meet the needs of your clients without compromising on your journey to net zero.

How do you ensure your supply chain is vetted?

It is important to form a good partnership between a building services provider and all sub-contractors to guarantee all services are delivered to an exceptional standard whilst working towards the government's goal to reach net zero by 2030. Forming professional relationships with key sub-contractors can ensure they operate and perform in line with clients' expectations and meet all KPIs, working towards a collective goal of becoming carbon neutral, if not already.

It is advised to discuss with existing providers their approach and how it aligns with your business, this opens an opportunity to source the right partners. The procurement procedure requires a stringent vetting process, following checks including health and safety, compliance procedures, and sustainability goals.

This rigorous process of reviewing your supply chain is critical to ensuring ESG commitments are met in an ethical and sustainable manner. By identifying risks, establishing the necessary standards, conducting due diligence, monitoring suppliers, and continuously improving processes, emphasising a more sustainable and responsible company reputation allowing for growth and corporate social security.

Many individuals believe that it is important to work with a company that aligns values and ethics. Company reputation plays an important factor and businesses want to work with partners that prioritise sustainability. These companies tend to be more resilient and have a better chance of long-term success.



The importance of establishing a sustainable supply chain in the building services sector.

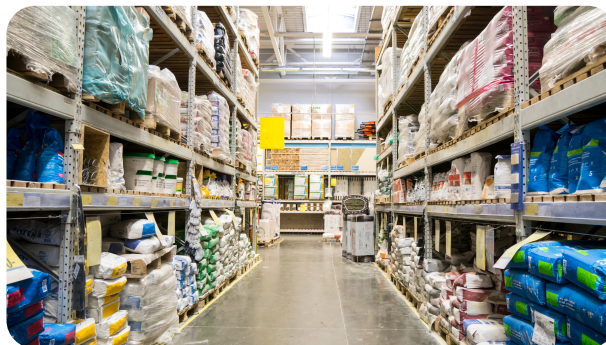


How can we identify & establish the ESG practices of every section of the supply chain?

In order to identify and establish the Environmental, Social and Governance (ESG) practices of every section of the supply chain, developing a strong ESG criteria is key, (i.e., a reduction in carbon emissions, the responsible sourcing of materials, reducing waste, and improving worker welfare), evaluating the performance of suppliers, setting targets for ESG reduction, monitoring progress and collaborating to address any issues that arise.

A sustainable supply chain not only benefits individual companies but also the building services industry as a whole. By establishing a partnership with the supply chain and working towards the same carbon goals, the industry can make significant progress towards reducing its environmental impact and contributing to global sustainability efforts.

By prioritising these factors, the industry can build a reputation for ethical and sustainable practices, attracting business from customers who value these principles.



MS' ESG Goals

MS follow the Sustainable Development Goals (SDGs), intending to end poverty, protect the planet and ensure that humanity enjoys peace and prosperity by 2030. We have commenced our 6-stage carbon management process, enabling us to reduce our carbon footprint in a realistic and manageable timeframe whilst supporting the carbon reduction goals of our clients.

In line with our clients, we aim to be a carbon neutral company by 2025 and 70% of our sub-contractors and suppliers to be certified carbon neutral. We aim to make conscious, proactive decisions when collaborating with any new business, ensuring their suppliers hold a similar ESG ethos to our own.

We pride ourselves on our staff retention rate due to the continuous commitment to our employees, ensuring equal opportunities for all and welcoming a variation of different lived experiences and backgrounds to our business. By directly employing a large proportion of our workforce, we have brought many services in house to ensure full accountability and that our works take place to a consistently high standard, facilitating significant cost saving opportunities for our clients.

The importance of establishing a **sustainable supply chain** in the building services sector.



Conclusion

A sustainable supply chain minimises the negative impact on the environment, ensures economic viability and promotes all efforts to fulfil corporate social responsibility. By using sustainable materials and reducing waste, you can lower your carbon footprint and reduce impact on natural resources. This, in turn, improves the reputation of all parties.

Aim to attract business from customers who value environmental responsibility and social justice in the same way we do. By establishing a systematic approach to ensuring our supply chain remains sustainable, our business can operate in a manner that meets the ESG needs of us and of our clients.

